



Comhairle Cathrach & Contae Phort Láirge
Waterford City & County Council

Annual Report 2015





2015 Annual Report

Foreword

Mayors Introduction



As Mayor of Waterford City and County Council, I am delighted to present the Annual Report for 2015, a year which represents the first full year of an amalgamated authority.

It has been a pleasure to support and contribute to the ongoing growth and progress which is evident across all areas of work supported by Waterford City and County Council. Waterford is well placed as the Gateway City and largest urban centre in the South East region and we as an organisation and elected representatives make a significant input into the lives of our citizens.

I wish to extend my gratitude to my fellow elected representatives and acknowledge the co-operation and support extended to me. I would also like to extend my appreciation to the Chief Executive and employees for their dedication and effort.

Managers Foreword



In presenting the 2015 Annual Report I am conscious of the significant level of change which the organisation is emerging from. Waterford City and County Council is a stronger, more consolidated organisation at the end of 2015.

I am confident we will continue to provide high quality public services to the people of Waterford. As Chief Executive of Waterford City and County Council I can assure you that all employees will work to make Waterford the best possible place for all its people and for those that wish to live, visit, work or invest here.

I look forward to the progression of the many innovative and challenging projects which have got underway in 2015; the development of the Waterford Greenway, the development of Mount Congreve as an international visitor attraction, the opening of Johns River Walkway, jobs announcements at West Pharma, Nearform, Bluefin and Agora to name a few. Waterford is taking steps towards recovery and I aim that we in Waterford City and County Council will do all we can to enable such ongoing growth and sustainable development.



2015 Annual Report

Contents

Your Council

Mayors and Cathaoirligh.....	9
Plenary Council.....	10
Principal Officers.....	11

People and Communities

Corporate.....	15
Community and Sports.....	19
Housing-General.....	20
Environmental Services.....	22
Libraries.....	27
Information Technology.....	28
Strategic Policy Committees.....	

Creating a Growth Culture

Economic Development.....	33
Arts.....	41
Planning.....	42
Strategic Policy Committees.....	45

A Strong Foundation

Property Management.....	49
Housing-Capital.....	51
Emergency Services.....	52
Roads, Transportation and Safety.....	55
Strategic Policy Committees.....	56

Our Finances

Annual Financial Statement.....	58
Councillors' Expenses	59
Councillors' Attendance.....	60

Annual Report 2015

Your Council





Your Council

Mayors and Cathaoirligh



Mayor of Waterford City and County Council
Cllr. John Cummins



Deputy Mayor of Waterford City and County Council
Cllr. John O'Leary



Mayor of the Metropolitan District of Waterford
Cllr. Eamon Quinlan



Deputy Mayor of the Metropolitan District of Waterford
Cllr. Jason Murphy



Cathaoirleach of Dungarvan and Lismore District
Cllr. Tom Cronin



Leas Cathaoirleach of Dungarvan and Lismore District
Cllr. James Tobin



Cathaoirleach of Comeragh District
Cllr. Liam Brazil



Leas Cathaoirleach of Comeragh District
Cllr. Seanie Power



Your Council

Plenary Council



Councillor	Electoral Area	Councillor	Electoral Area
Cllr Liam Brazil (FG)	Comeragh	Cllr Eddie Mulligan (FF)	Waterford City East
Cllr Breda Brennan (SF)	Waterford City South	Cllr Jason Murphy (FF)	Waterford City South
Cllr Mary Butler (FF)	Comeragh	Cllr Pat Nugent (FG)	Dungarvan & Lismore
Cllr John Carey (FG)	Waterford City East	Cllr Seamus O'Donnell (Ind)	Dungarvan & Lismore
Cllr Declan Clune (SF)	Comeragh	Cllr John O'Leary (FF)	Comeragh
Cllr Joe Conway (Ind)	Tramore & Waterford City West	Cllr Cha O'Neill (Ind)	Waterford City South
Cllr Tom Cronin (FF)	Dungarvan & Lismore	Cllr Michael J O'Ryan (FF)	Comeragh
Cllr John Cummins (FG)	Waterford City South	Cllr Lola O'Sullivan (FG)	Tramore & Waterford City West
Cllr Davy Daniels (Ind)	Waterford City East	Cllr Seanie Power (FG)	Comeragh
Cllr Declan Doocey (FG)	Dungarvan & Lismore	Cllr John Pratt (Lab)	Dungarvan & Lismore
Cllr Pat Fitzgerald (SF)	Waterford City East	Cllr Eamon Quinlan (FF)	Tramore & Waterford City West
Cllr Damien Geoghegan (FG)	Dungarvan & Lismore	Cllr Sean Reinhardt (Ind)	Waterford City South
Cllr Jim Griffin (SF)	Tramore & Waterford City West	Cllr Mary Roche (Ind)	Waterford City East
Cllr Blaise Hannigan (Ind)	Tramore & Waterford City West	Cllr James Tobin (FF)	Dungarvan & Lismore
Cllr John Hearne (SF)	Waterford City South	Cllr Siobhan Whelan (SF)	Dungarvan & Lismore
Cllr Joe Kelly (Ind)	Tramore & Waterford City West	Cllr Adam Gary Wyse (FF)	Waterford City East

Your Council



Principal Officers

Principal Officer

Michael Walsh

Chief Executive

Directors of Service

Fergus Galvin

Water, Environment and Corporate

Michael Quinn

Housing, Community and Culture

Paul Daly

Roads, HR and Emergency Services [Acting]

Lar Power

Economic Development and Planning

Ivan Grimes

Boundary Review

John Murphy

Head of Finance

Senior Officers

Eddie Ruane

SEO Corporate

Raymond Moloney

SEO Water and Environment

Don Tuohy

SEO Community

Joe Sullivan

SEO Housing

Carmel Hourigan

SEO Human Resources

Billy Duggan

SEO Economic Development

Richard Walsh

SEO Economic Development

Anthony McElroy

Head of Information Systems

Ian Fitzpatrick

SEO Procurement

Bryan O'Kane

Management Accountant

Donal Murphy

Management Accountant

Catherine Horan

SEO Transition Office

Jane Cantwell

City and County Librarian

Eamonn McEneaney

SEO Waterford Treasures

Ray Mannix

Senior Engineer Roads

Pat McCarthy

Senior Engineer Roads

Gabriel Hynes

Senior Engineer Water and Environment

P.J. Kindregan

A/Senior Engineer Water and Environment

Jim O'Mahony

Senior Planner

Rupert Maddock

Senior Architect

Niall Curtin

Chief Fire Officer

Paul Johnston

Senior Resident Engineer Housing

John Croke

Senior Project Resident Engineer Water



Your Council

Leavers and Retirees 2015

Employees who retired in 2015

Anne Murphy,	Assistant Staff Officer
Mary Walsh,	Assistant Staff Officer
Claire O'Mullain,	Library Assistant
Catherine Monaghan,	Clerical Officer
Brian White,	Director of Service
Gerardine Murphy,	Library Assistant
Kathleen Meehan,	Assistant Staff Officer
Andrew Weldon,	Caretaker
Donald Murphy,	Charge hand Fire Service
Brian J Cullen,	Firefighter
Sean Walsh,	Foreman
Michael Donnelly,	General Operative
John Dunne,	General Operative
Seamus Fenton,	General Operative
Tommy Purcell,	General Operative
Paul Hanlon,	General Operative
Thomas O'Leary,	General Services Supervisor
Anthony Higgins,	School Warden

Leavers in 2015

Tess Mansfield	Burial Ground Caretaker
Mary Freyne	Traffic Warden
Michael Mansell	Assistant Engineer
John O'Sullivan	Assistant Planner
Aoife Sugrue	Executive Engineer
Tyrone Power	General Operative
Andrew Harrington	Project Officer
Paul L'Estrange	Senior Assistant Chief Fire Officer
Neil Cusker	Firefighter
Keith McDonnell	Retained Driver Fire Service
Stephen Gough	Retained Driver Fire Service
Jacqueline Ryan	Retained Firefighter
Marcus Prendergast	Retained Firefighter
Theo Fitzgerald	Retained Firefighter
Austin Carroll	Retained Fire Station Officer

Annual Report 2015

**People
and
Communities**





Corporate Customer Services and Education



Customers through our Doors per week (approx)



Calls to Customer Services per week (approx)



Customer (CRM) Cases Opened per week (approx)



Percentage of Customer CRM Cases Closed within one week (approx)



Higher Education Grants for the Academic Year 2014/15



Junior Achievement
Ireland

Junior Achievement 2014/15
A partnership in shaping brighter futures.

17 Waterford City and County Council volunteers inspired and motivated 224 students in six local schools.

Corporate Communications



Website

www.waterfordcouncil.ie

Number of page views to
waterfordcouncil.ie

856,165

Number of
unique visitors

135,596

32% of those who visited
our website did so on
mobile devices this
number continues to
grow year after year.



Most popular pages on waterfordcouncil.ie
in 2015 (excluding the homepage) :

- Online Planning Enquiries
- Council Section (meetings, documents etc.)
- Planning Homepage
- Forms and Press Releases
- Contact Form



Waterford City and County Councils Facebook page (Waterford Council) received 1530 New Page Likes in 2015. The average engagement rate of posts at 5%, this shows the quality content in our posts.



@waterfordcouncil is Waterford City and County Council's Twitter handle. In 2015 @waterfordcouncil tweeted 361 times. This gave the account average impressions of 2,600 per day and a 2.1% engagement rate. Over the year there was 2.5k link clicks from our tweets.

#OurCouncilDay

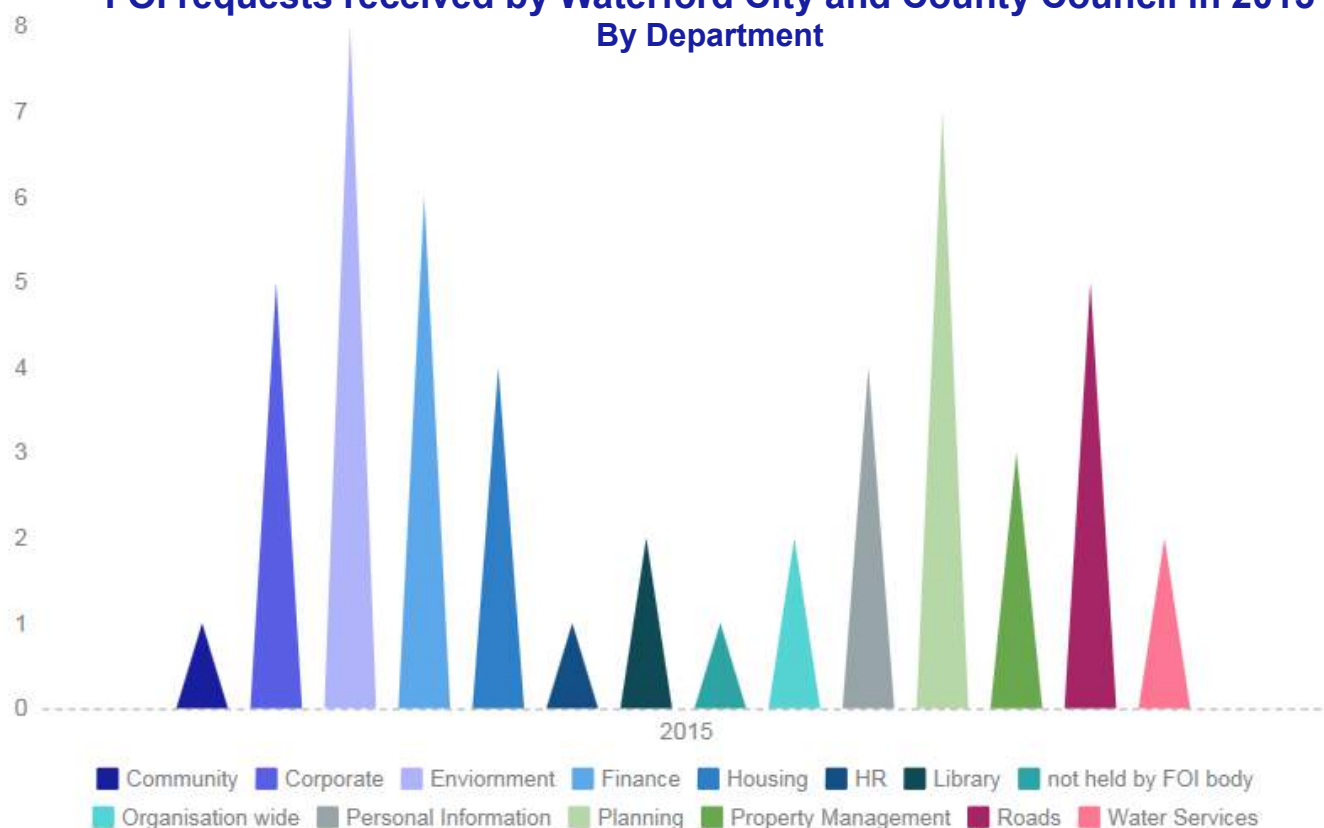
We also participated in #OurCouncilDay 2015 which is national event organised by the Local Government Management Agency (LGMA) aimed at showcasing the 'behind the scenes' or human element to Councils across Ireland.



Corporate Freedom of Information (FOI)

The **Freedom of Information** Acts give people a right of access to records held by many public bodies including Government Departments, the HSE and Local Authorities. The Office of the **Information** Commissioner reviews decisions made by public bodies in relation to **Freedom of Information** requests.

**FOI requests received by Waterford City and County Council in 2015
By Department**



Oifig an Choimisinéara Faisnéise
Office of the Information Commissioner

Reviews by the Office of the Information
Commissioner 2015

Subject of Request	Decision
Finance	Decision Varied
Housing	Decision Not Reached
Housing	Decision Not Reached
Housing	Decision Annulled
Roads	Decision Not Reached
Roads	Decision Not Reached



Corporate

Town Twinning's 2015

Torbay and Dungarvan

A Council delegation attended the Newfoundland Irish Connections Festival in Torbay during September 2015.

Cost: €2120



Two groups of traditional musicians participated in the Ireland Newfoundland Connections Gathering in September 2015.

Cost: €3000



Tramore and Cadaujac

In 2015 Tramore Teachers visited Cadaujac and there was also a return visit of 20 to Tramore.

Cost: €5925

St. Herblain and Waterford

Waterford hosted a group from St. Herblain for a Tennis Tournament in St Anne's Tennis Club. This exchange provides the opportunity for the participants to experience another country, to create strong links and to participate together in sporting and cultural activities.

Cost: €2730



Community and Sports

Community Services

Number of visitors to Local Authority operated facilities

134,485

Number of groups registered with Public Participation Network

505

% of local schools involved in Comhairle na n-Óg

90%

Number of outreach engagements held

720

COMMUNITY

- €155,000 was allocated in 2015 through the Community and Sports Grants scheme whereby local sports clubs, residents associations and community voluntary groups are financially assisted.
- September 2015 saw the introduction of the community portal website www.waterfordlife.ie
- A Community Plan was developed in 2015 for a number of different community and local development frameworks.
- Community Support Officers are on the ground supporting communities in actions such as the Ballybeg Brick by Brick Initiative, The Portlaw Taskforce Project and the Cathal Brugha Estate regeneration.
- Waterford had two award winning entries in the 2015 Pride of Place competition.
- Waterford Comhairle na nÓg established itself as the leading youth council in Ireland.



SPORTS



- There were 134,485 visitors to local authority operated facilities in 2015.
- Waterford Sports Partnership and Waterford City and County Council partnered successfully on a number of projects, including the Sean Kelly Tour, National Bike Week and the Carrickphierish Community Sports Hub project.
- Williamstown Golf Club has been extensively used as the municipal golf course.
- During 2015 Waterford City and County Council added a UEFA approved referees room and state of the art weights room to the Regional Sports Centre.

SOCIAL INCLUSION

- The Social Inclusion Community Activation Programme (SICAP), worth €823,000 to the City and County in 2015, commenced. This will continue to have a major impact on disadvantaged communities and individuals into 2016 and beyond.



Housing - General

Community & Homelessness RAS, HAP & Grants



Community Development

In 2015 there were 204 anti-social behaviour cases opened. 42 of these cases required enforcement actions to be taken.

- Enforcement Action Taken (21%)
- No Enforcement Action (79%)

Homeless Services

Waterford City and County Council aim to provide safe, good quality accommodation for the people with greatest need and work to prevent and eliminate homelessness.

In 2015 there was no need to sleep rough in Waterford.
An additional 12 homeless units were provided.

RAS and Leasing Programme

Number of HAP leases 2015



Number of RAS leases 2015



Percentage of landlord renewals in 2015



Grants

Number of grant applications received



Number of grants issued



Total grants budget





Housing - General

Housing Assessment, Allocation and Transfer

Waterford City and County Council aim to develop sustainable communities and allocate housing in accordance with the allocation scheme and in the interests of estate management.

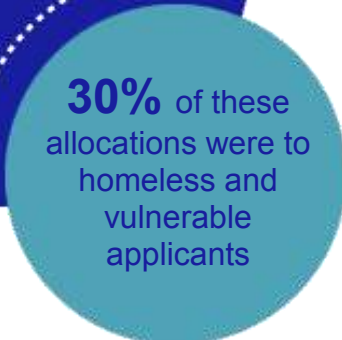
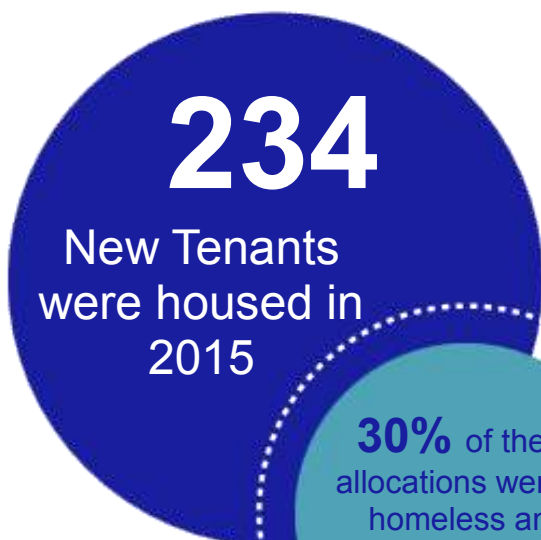
Number of assessments
in 2015



Number of
applications
received in 2015



Number of
applications
approved in 2015





Environmental Services

Litter Management & Street Cleaning

Number of full time litter wardens employed

4

Number of on the spot fines issued and paid

211

Number of prosecutions referred

4

Number of notices served under the Litter Pollution Act

1

The results of the 2015 Irish Business Against Litter (IBAL) anti-litter survey reveal that both Dungarvan and Waterford have retained their litter-free status and were judged to be cleaner than European Norms.

**Dungarvan: 4th out of 40 towns / cities surveyed.
Cleaner than European Norms.**

**Waterford: 8th out of 40 towns / cities surveyed.
Cleaner than European Norms.**

- Waterford City and County Council administered grants totalling €38,000 through the Anti Litter and Anti Graffiti Grant in 2015.
- Waterford City and County Council distributed €11,000 through the LA21 Environment Partnership Fund 2015.
- 5 series of Stop Food Waste workshops were carried out in 2015.
- The gum litter task force aims to raise awareness of the impact of littered gum and encourage proper gum disposal.
- In 2015, the following campaigns were initiated: Stop Junk Mail, confidential waste campaign, upcycling events, recycling campaigns, etc
- €7000 was received from the LAPN fund for projects relating to waste prevention.

82 groups took part in National Spring Clean in 2015. 16 towns, villages and the city in Co. Waterford entered into the Tidy Towns competition in 2015. Ardmore and Lismore were both awarded gold medals; Dungarvan, Stradbally and Waterford were awarded silver medals; Tramore was awarded a bronze medal.





Environmental Services

Litter Management & Street Cleaning

Number of litter / pollution quantifications surveys



Number of routine waste inspections



Number of ATM surveys



Number of non routine waste inspections



300 saplings were donated by Coillte and made available to groups within Waterford. By encouraging individuals, family groups, schools and local communities to organise or take part in Tree Week events, we are prompting and enabling people to play their part in making a difference to our efforts to live more sustainably, bringing about numerous benefits.



101 primary schools, secondary schools and preschools are registered to take part in the **Green Schools programme**. We support An Taisce's Green Flag programme for schools.



The introduction of CRM the Customer Relations Management system provides accurate recording of information regarding the various types of interaction between the public and the environment dept. This has improved responsiveness and provided a valuable reporting tool for environmental management.



A Dog Fouling Action Plan has been developed and implementation of the actions has commenced.



A mobile GIS app has been developed for field-based surveyors and has been used to compile surveys in respect of litter. This move away from manual recording of data has resulted in an **80%** reduction in the time required to produce statutory litter surveys.



Environmental Services

Landfill Operation and Aftercare

The wind turbine at the Civic Amenity Site Dungarvan generated 13,000 KWh in 2015, which equates to a annual cost saving of €2,600. The wind turbine at the old landfill site Tramore generated 25,000 KWh in 2015, which equates to an annual cost saving of €5,000 per year.



The former Landfill sites at Kilbarry, Dungarvan & Tramore have been fully remediated and are being monitored and managed in accordance with EPA licence requirements.

An aftercare management plan in respect of Kilmacleague has been prepared and submitted to the Department and approval is awaited. During 2015 a tender in respect of the design and completion of works at the Kilbarry Civic Amenity Site has been prepared and advertised.

Recovery and Recycling Facilities

Provision of Waste Collection Services

**2267
Tonnes**

of segregated Glass & Textiles collected at Civic Amenity Sites and Bring Banks in 2015

- Credit card & cash payment systems were introduced at Dungarvan Civic Amenities Site in March 2015.
- The network of bring banks was extended with the addition of a site at Kill, Co Waterford. Can banks were also introduced during the summer season at a number of beaches.
- The domestic waste collection service by the Council in the county area ceased in January 2015. Staff have been re-deployed to other duties in the Council.
- A pilot programme to provide segregated waste collection facilities was completed and the findings from the exercise are being assessed to continue to roll out a more effective means of collection and segregation of internal waste.



Environmental Services

Waste Regulations Monitoring and Enforcement Waste Management

1736

Complaints relating to waste and litter were received and investigated

The 2015 Recommended Minimum Criteria for Environmental Inspections (RMCEI) Plan was prepared with a focus on the National Enforcement priorities and all inspections were carried out in accordance with the plan. In 2015 Environmental Protection Agency (EPA) graded Waterford in it's 'High Performance' Category for the 2014 Plan.

The Southern Region Waste Management Plan was adopted. 10 local authorities in the Southern Region of Ireland have been set a number of key targets in relation to waste prevention activities under a new plan that was launched on the 14th May 2015 - **Southern Region Waste Management Plan 2015-2021**.

Energy

Upgrades of Mechanical & Electrical services completed 121-122 Parade Quay and 35 The Mall works on going.

A Waterford City & County Council Report was submitted to SEAI on achieving 33% energy reduction by 2020.



Funding in excess of

€1,000,000

was received for energy related projects



Environmental Services

Veterinary Services and Dog Control

Regular food safety surveillance inspections, ante and post – mortem inspection, slaughter and animal welfare audits, traceability and labelling audits have been carried out during 2015 in the nine approved meat premises (3 slaughterhouses and 6 meat processing premises) and four registered meat premises/vehicles under supervision in accordance with the service contract with the Food Safety Authority of Ireland fulltime and part-time veterinary inspector. Sampling activity during 2015 comprised veterinary medicine residue sampling, water sampling, food microbiological sampling, carcase microbiological sampling, food additive sampling, Scrapie sampling and suspect TB lesion sampling.

During 2015 a major dog licence inspection programme was launched.

Radio and social media advertising was utilised during the period of the inspection programme. Follow up door-to-door inspections were carried out in each area according to a set timetable. The programme of targeted inspections proved to be effective with a resultant increase in the number of licences issued.

Comparison of Dog Licences Issued 2014 & 2015



56%

Increase on 2014
Dog Licence
Figures

827

New Dog Licences
issued in 2015

Control of Dogs Bye Laws 2015

A number of improvements have been made to the Dog Shelter with works being carried out to the access gates, painting of the buildings and provision of new water supply.

The Control of Dogs Bye-Laws 2015 came into effect on the 1st November 2015.

In making the Control of Dogs Bye Laws 2015 a single common set of regulations governing the control of dogs within the administrative area of Waterford City and County Council was created and introduced the requirement for a higher level of responsible dog ownership.



Libraries

Library Services

Waterford City and County Council's library service provides opportunities to the diverse population across Waterford City and County for Learning, Community Interaction and Cultural Participation.

Number of Visitors to Waterford Libraries in 2015

505,203

Number Events held by Waterford Libraries

2550

Annual Expenditure on Stock per Head of Population

€1.71

Number of WIFI uses

10,358

Number of Internet Sessions

61,720



Number of items issued for books
381,483



Number of items issued for other

127,028

Number of Audio Book Downloads

1260

Number of E Book Downloads

3958

Information Technology IT Services



Waterford City and County Council is dedicated to providing efficient IT service for customers, staff and Council members.

In 2015 the general focus of IT work was to finish out the integration of systems between the former City and County to allow the new council operate as a single entity and provide a uniform service at all service locations in the city and county.

Projects

- The efficiency of communications was greatly improved with the procurement and installation of a new telephone system with a dedicated customer service interface.
- The IT Department assisted in the provision of IT and telephone services to the newly constructed Fire Station in the city and the new Library in Carrickphierish.
- Electronic distribution of council meeting documents was introduced along with the provision of IT support at all Council meetings.
- All desktops were upgraded from Windows XP to Windows 7 in quarter 1 as well as the Microsoft Office 7 package to ensure uniformity of systems across all departments.
- The procurement and implementation of a managed print solution across all department produces a more efficient service allowing printing on any device at any location. This centralised print solution also offers considerable cost savings.
- SharePoint and organisation-wide File Management process was put in place in 2015. The introduction of this process will reduce duplication and increase collaboration across all departments. A centralised area for core resources is available to staff for retrieval of commonly used information. All departments can access training and support on efficient use and development of functionality.



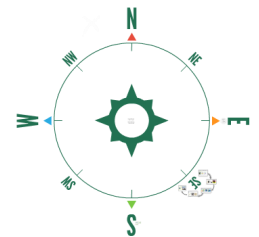
Windows[®] 7





Projects

- Increased usage of WatMaps and core GIS systems to meet the specific business needs of the organisation was evident in 2015 with the turnover of new users, numbers of requests to the GIS server and by consistent requests for support and demands by other sections within the organisation. During 2015 a public facing map portal launched and a number of maps and apps were developed to support Planning, Tourism, Roads etc..



- The organisation upgraded to CRM 2015 in June 2015, and CRM is now the main system for managing contacts with the public. Modules have also been developed for Environment, Planning and Economic Development. CRM was integrated with AutoAddress to facilitate mapping of incidents and with mobile Incident Capture for "in-the-field" recording of cases. Mobile CRM has also been rolled out to some phones on a test/trial basis.
- All Microsoft licences for the former city and county authorities were rationalised, combined and agreed with Microsoft. The desktop software, for office, SharePoint, CRM etc was standardised to give greater efficiencies and reduce support requirements.



Strategic Policy Committees Housing, Community, Culture, Sport and Recreation



Environmental Protection

Housing, Community, Culture, Sport & Recreation (12)

Michael Quinn, Director of Services

1 SPC Chair: **Cllr. John Pratt**

7 Councillors:

1.	Cllr. Breda Brennan
2.	Cllr. Damien Geoghegan
3.	Cllr. John Carey
4.	Cllr. Blaise Hannigan
5.	Cllr. Cha O'Neill
6.	Cllr. John O'Leary
7.	Cllr. Sean Reinhardt

4 Sectoral Reps:

1.	Social Inclusion	Tony McSweeney
2.	Community/Voluntary	Rosemary Kennedy
3.	Union	Jemma Mackey
4.	Environment	Michael Farrell

There were four SPC meetings held in 2015.

Policy documents approved by the SPC for adoption by Plenary Council in 2015:

29/01/15	ASB Strategy
26/03/15	Local Community Development Plan
29/09/15	Per Cent for Arts Scheme
03/12/15	Housing Disability Strategy

Environmental Protection (10)

Fergus Galvin, Director of Services

1 SPC Chair : **Cllr. John Hearne**

5 Councillors :

1.	Cllr. Declan Clune
2.	Cllr. Declan Doocey
3.	Cllr. Jim Griffin
4.	Cllr. John Pratt
5.	Cllr. Mary Roche

4 Sectoral Reps:

1.	Environment	Peter O'Connor
2.	Farming	Peter Kiely
3.	Community & Voluntary	Brid O'Heir
4.	Social Inclusion	Kate Moloney

There were four SPC meetings held in 2015.

The SPC drafted Byelaws which were subsequently adopted by the Council on Parks & Open Spaces and Control of Dogs.

The SPC adopted the Roundabout Sponsorship Scheme.

The SPC considered the following:

Dog Fouling Policy
RMCEI Plan 2015
WEB Strategy 2015 – 2020
River Basin District Management – LA Role
Control of Horses
Litter Management Plan

Annual Report 2015

Creating a Growth Culture





Waterford Local Community Development Committee



Developing our communities

Coiste Forbartha Pobail Áitiúil
Local Community Development Committees

Waterford LCDC held 5 meetings in 2015.

The main focus of the work of the LCDC in 2015 was in programme oversight of both the Social Inclusion Community Activation Programme (SICAP) and the Rural Development Programme as well as the preparation of the Local Economic & Community Plan (LECP) for the period of 2015-2020.

Social Inclusion Community Activation Programme

Following a tendering process, Waterford LCDC awarded the contract for the delivery of SICAP across Waterford to Waterford Area Partnership Board.

**2015 Budget
€823,835**

Rural Development Programme

Waterford LCDC successfully applied to be the Local Action Group (LAG) for the purpose of applying for Rural Development Programme funding for the period of 2015-2020 in the amount of €7,522,796.

The LCDC approved the appointment of Waterford LEADER Partnership as the Programme Implementer to both prepare the Local Development Strategy and to administer the implementation of the Rural Development Plan.

The LCDC received confirmation on December 2015 that their Local Development Strategy (LDS) met the requirements of the National Independent Selection Committee for implementation.

Local Economic and Community Plan 2015 - 2020

Waterford LCDC had a key role in preparing the community elements of the Local Economic and Community Plan (LECP) which was formally adopted by Waterford City and County Council on July 9th 2015.



Economic Development

Tourism Promotion



Waterford, Where Ireland Begins

www.visitwaterford.com

In 2015, Waterford City and County Council launched a new tourism brand: Waterford, Where Ireland Begins.

Featured in 2015 by:



Through out 2015 Waterford City and County Council worked with many partners promoting, marketing and selling Waterford.



Waterford received extensive media coverage in 2015, with features on Nationwide and other lifestyle programmes and also gained excellent travel features in both newspapers and magazines.

Lismore Best Small Tourism Town 2015

Ardmore was also shortlisted in the Nations Top Ten Tourism Towns



**WATERFORD
VIKING TRIANGLE**

was shortlisted for **Best Local Authority Tourism innovation and Best Cultural Experience** in the inaugural Irish Tourism Industry Awards.

Dungarvan was shortlisted in 2015 in both the 'Foodie Towns' and in Eden - European Food Destination of Excellence competitions.



The Tourism Department worked closely throughout 2015 with Fáilte Ireland to maximise the opportunities associated with the launch of the new South/East tourism brand 'Ireland's Ancient East'.



Economic Development

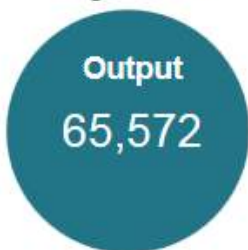
Tourism Promotion

Heritage Tourist Service

The objective of the Heritage Tourist Service is to tap into the potential of visitors to the House of Waterford Crystal.



Number of Visitors in 2015 to the Museum
Target 60,000



Spend in Museum 2015
Target €235,000



Nineteen Events received funding under the Waterford Community Tourism Dispora Scheme. This initiative is jointly funded by Fáilte Ireland, Waterford City and County Council and IPB.



Waterford City and County Council collaborated with Kilkenny County Council, Wexford County Council and Waterford Airport in a UK promotion for the South East which targeted Birmingham and London on radio and billboards.



Waterford City and County Council supported a Sales Trade Trip to the USA aimed at Cruise Ship Tour Operators.



Waterford was promoted to tour operators in Atlanta and Florida as part of the 'Jump into Ireland' event organised by Tourism Ireland in April 2015 was promoted at the International Trade Fair organized by Fáilte Ireland 'Meitheal' in Dublin.

REDZ

funding was secured

for a tourism signage scheme for the Copper Coast Scenic Drive and the Comeraghs Scenic Drive.

REDZ funding was also secured for marketing Tramore as a tourism destination.



Economic Development

Destination Waterford Tourism Committee

The Destination Waterford Tourism Committee set up working groups to address key objectives for the destination of Performance Measurement and Destination Training.

- Working in partnership with WIT and Waterford Chambers of Commerce, Waterford City & County Council supported an initiative to gather and analyse data which will measure the performance of Waterford as a tourism destination; ensuring tourism fulfils its potential as a key generator of economic impact.
- Destination training was provided for front of house hotel and bar staff in the city. The training was organised by Destination Waterford and delivered by Fáilte Ireland in Waterford City, Dungarvan and Tramore.
- As part of the training, a number of employees were invited to experience the key tourist attractions in Waterford, with the intention that they can personally recommend the key attractions to visitors of Waterford. This enables employees to appreciate the range of tourist attractions and activities that are available in our City and County. 2015's training covered "Ireland's Ancient East" our new tourism brand.





Economic Development

Local Enterprise Office

Oifig Fiontair Áitiúil
Local Enterprise Office

The Local Enterprise Office LEO

operates with the express purpose of supporting the development and growth of small business and acting as a "first stop shop" to the enterprise community.



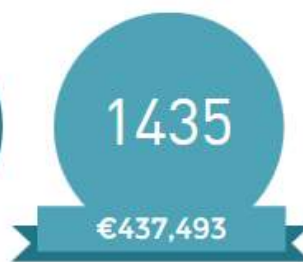
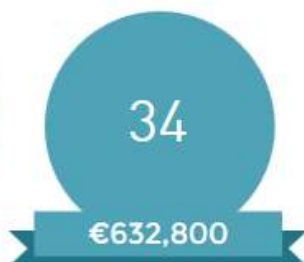
Number of clients met 2015

Number of clients applying for Measure 1 support 2015

Number of clients securing Measure 1 support 2015

Number of clients applying for Measure 2 support 2015

Number of clients securing Measure 2 support 2015



To qualify for support from Waterford LEO applicants must meet the following requirements:

- Micro-enterprises with 1 -10 employees.
- Business operating full-time within Waterford City and County Council area.
- Demonstrate a market for the product/service.
- Must operate in a commercial sphere.

The types of grants/supports available include:

Measure 1 Grants

(Applicants must be either manufacturing or a potentially internationally traded service)

Feasibility Study Grants

Priming Grant

Business Expansion Grant

Measure 2 Grants

Marketing Assurances

Export Marketing Assurances

Trading Online Vouchers: Funded by the Department of Communications

Trading Online Assurances

Mentoring

More information on LEO supports and eligibility can be found at www.localenterprise.ie/Waterford/



Economic Development

Festivals and Concerts



Number of Arts Events Supported & Value of Support



€159,320

Number of Economic Events Supported & Value of Support



€1,217,497

Number of Community Events Supported & Value of Support



€81,414





Economic Development

Waterford Museum of Treasures, Three Museums in the Viking Triangle



Waterford Treasures is the only cultural institution in Ireland that is open seven days per week 362 days per year. To facilitate tourists the Museum opens until 6.00pm during the months of May, June, July,

August and September. To facilitate the Winterval offering end of November- December, the Medieval Museum remains open until 8.00pm at weekends.

The grand total of visitor to the three museums that make up the Waterford Museum of Treasures is

96,390

FRIENDS OF THE MUSEUM

The enthusiasm for the museum is reflected in the fact that it now has 132 Friends, drawn mainly from Waterford city and county who on a bi-yearly basis donate a **minimum of €150 with some individuals donating €5,000 annually**. The funds raised by the Friends of the Museum are used to have items conserved and to purchase items relating to the history of Waterford city and county.

Notable loans/gifts and purchases which were added to the Bishop's Palace displays in 2015

- A 17th century giltwood sculpture 'Baptism of Christ by John the Baptist' by Alessandro Algardi.
- 18th Century objects including a Bible box dated 1729.
- A pair of silver candlesticks
- 18th century a two-handed loving cup made by a Waterford man.
- 18th century rocking horse
- Purchased an 18th century gentleman's silk net purse.
- Purchased a Thomas Sautelle Robert print of Carrick Castle.
- Bronze bust of Lord Roberts.
- A large 19th century painting of the ship Melina which plied the Waterford coast.
- Tiny china bud vase with crest of Waterford City (in memory of Colm Long).
- Smiths History with 9 sketches of Waterford Buildings (loan from Marsh's Library)
- B/W print of Christ Church.

Items acquired by public appeal for the museum's new 1916 exhibition

Other Voices

- 19th century Denny Salters/Thomas Francis Meagher banner which the Museum had conserved.
- Three personal items of Edmund Ignatius Rice.
- A model of World War I trenches.
- The collection of memorabilia of James W Upton, printer to the 1916 Rising.
- A dress sword presented to Lieut. Higgins son of the Town Clerk fighting in World War I.
- 5 original Poole photographs of Brugha, Markievicz, Mrs Sheehy-Skeffington, De Valera and Mayor Vincent White.
- Waterford Glass pieces by master engraver Tom Hayes & by Heinz Plattner.
- 2 War of Independence medals.
- Irish Volunteers memorabilia and an autograph book from Spike Island 1921.
- Collection of fifty World War I letters from Private Charley Richards to his family in Cathedral Square.
- Collection of original letters from a Dublin-Waterford family written during Easter Week giving remarkable details of the destruction in Dublin during the Rising.



Economic Development

Waterford Museum of Treasures and The Three Museums in the Viking Triangle

Notable loans/gifts which were added to the Medieval Museum displays:

- Two 15th century Waterford altar crosses (one from the parish of Rathgormack, the other Waterford City).
- A very rare 1483 document signed and sealed by Mayor James Rice (earliest seal in existence of Waterford Corporation).
- The Friends of Waterford Treasures financed the purchase of a 17th oak side table.

Other notable gifts:

- Collection of some 35 paintings of a Waterford émigré in the 1950s to Rochester, NY, now hanging in the Committee Room in City Hall.
- Chair from the VEC (wood from Timbertoes bridge) carved with the coat of arms of the city dated 1913.
- Roman coin found in Mount Pleasant.



The international reputation of the museum is reflected in the number of television programmes that the museum has featured in during 2015, namely Channel 4 , BBC1 and the American broadcaster CNN.



Channel 4 *Treasures of Ireland* - Waterford Treasures was the only non National Cultural Institution to feature on this programme



BBC I *Journeys through Ireland*

CNN *The Jesus Code* - Waterford Treasures was one of only six museums in the world to feature on this programme.



Improvements/ Additions to the Viking Triangle

- On July 2nd 2015 Minister Humphreys unveiled the Lewis chess set and a glass information panel.
- Seven additional glass information panels were designed, produced and installed.
 - 2 on the gable of The Reg
 - Portlairge dredger
 - Chairman's Lane
 - Medieval Museum listings of awards
 - Brick Lane



Arts



Arts Services

In 2015 the Arts Office supported many National events such as ..

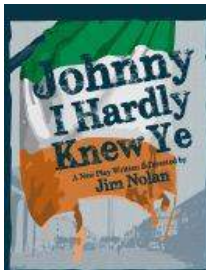


The annual Arts programme received support from..



..for projects such as:

- Artlinks, supporting professional development of Waterford artists.
- Arts in education projects.
- Arts projects in a community context.



The Arts Office commissioned a new play by Waterford playwright Jim Nolan 'Johnny I Hardly Knew Ye' - a topical and provocative contribution to the Easter Rising Centenary Commemoration 2016.



The Arts Office worked with the European Capital of Culture 2020 bid team under the Three Sisters banner.

THREE SISTERS 2020

CILL CHAINNIGH—PORT LÁIRGE—LOCH GARMAN
Iarrthóir ar Phríomhchathair Chultúrtha na hEorpa



As 2015 was the 20th Anniversary of the late Waterford Writer Seán Dunne, the Waterford Writers Weekend featured special events to honour his literacy legacy.

The Arts Office ran two national literature awards the Molly Keane Creative Writing Award and the Seán Dunne Young Poets Award Annually.



Infrastructure

The Local Authority made a significant contribution to the artistic infrastructure with Arts Practice, Arts Festivals and Arts Venues grants.

The Old Market House Arts Centre, Dungarvan and Greyfriars Gallery in the City provided a year round exhibitions programme. Tramore Development Trust continues to operate the Coastguard Cultural Centre, Tramore. Soma Contemporary Gallery and Hive Emerging Gallery have opened under curatorial teams. Renovations on the Town Hall Theatre, Dungarvan commenced in late 2015.



Planning

Development Management

Number of decisions decided within 8 weeks

423

Number of decisions which required further information

120

Average length of time (in days) for a decision to be made where further information was required

68

Number of pre-planning meetings held

451

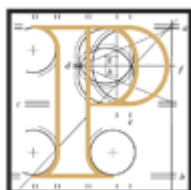
Number of applications granted

551

Number of applications refused

25

An Bord Pleanála



Number of cases where the decision was **confirmed** by An Bord Pleanála
13 from 18

Number of cases where the decision was **reversed** by An Bord Pleanála
5 from 18

- During 2015 Waterford City and County Council was the 1st Council nationally to launch a new online planning map register which works on all devices and all browsers.
- We have developed an electronic end to end process for our registers (Planning Register, PrePlanning, Section 5 etc...).
- We have developed internal email reports of current case load and management statistics.
- During 2015, online interactive policy maps were delivered to the public in areas of the Wind Policy and Rural Housing Designation.
- Our planning applications are now available to the public in augmented reality via Map Alerter.



Planning Enforcement

Total number of cases subject to complaint that were investigated

183

Number of enforcement procedures taken through warning letters

56

Number of enforcement procedures taken through enforcement notices

27

Number of prosecutions

2

Forward Planning

- The Development Contribution Scheme for Waterford City and County Council was adopted on the 12th February 2015.
- Support for the Living City Initiative is ongoing.
- The Variation of the existing City and County Development Plan Development Management Standards Chapters has been advanced. It is now due to go on public display in March 2016.
- The review of the Record of Protected Structures is ongoing; a substantial amount of work has been completed in merging the City and County databases into one composite data base—the review is due for completion Q3 2016.
- A comprehensive submission was made to Eirgrid in respect of the Eirgrid - Grid 25 project.
- The Greenway Triangle Development Strategy was completed in 2015.
- A comprehensive planning report was prepared for the Waterford City Boundary extension Submission.
- Input into Compulsory Purchase Orders and Part VIII Planning applications was undertaken during the year.

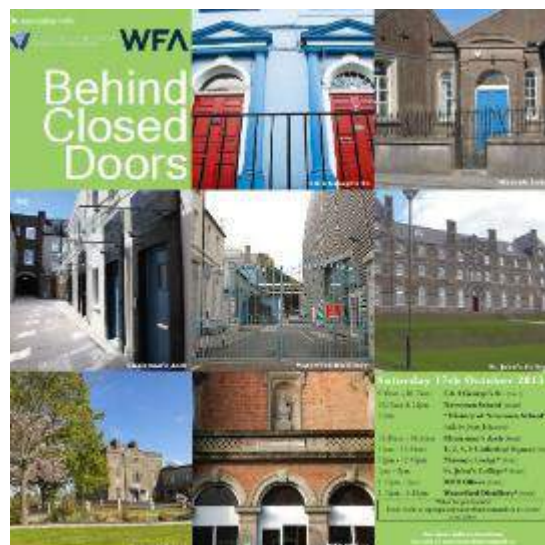




Planning Heritage and Conservation Services

- The Heritage Plan is currently under review and due for completion by Quarter 4 of 2016.
- A Heritage Forum for the City and County was established.
- Monies were allocated and works completed under the Structures at Risk Fund 2015.
- The Behind Closed Doors event was held for the first time in Waterford City in October 2015.
- Restoration works were carried out on numbers 1,2,4 and 5 Cathedral Square, where medieval timbers and features were reinstated.

Waterford City and
County Council
was awarded
€10,000
for maintenance and repair
work by the Heritage
Council under the Irish
Walled Towns Network
Scheme





Strategic Policy Committees

Economic Development & Enterprise

Planning

Economic Development and Enterprise (14) Lar Power, Director of Services

1 SPC Chair : **Cllr. Liam Brazil**

There were six Economic Development and Enterprise SPC meetings held in 2015.

The main policy document for 2015 was the Local Economic and Community Plan.

7 Councillors:

6 Sectoral Reps:

1.	Cllr. John Cummins
2.	Cllr. Davy Daniels
3.	Cllr. Pat Fitzgerald
4.	Cllr. Eddie Mulligan
5.	Cllr. Pat Nugent
6.	Cllr. Eamon Quinlan
7.	Cllr. Lola O'Sullivan

1.	Business	Brendan Cummins
2.	Trade Union	David Lane
3.	Farming	Mark Connors
4.	Environment	Samantha Richardson
5.	Social Inclusion	Andrea Galgey
6.	Community and Voluntary	Gerty Murphy

Planning (12) Lar Power, Director of Services

1 SPC Chair: **Cllr. M.J. O'Ryan**

There were three SPC Meetings held in 2015 (4/3/15, 3/6/15 and 4/11/15).

6 Councillors:

Policy documents approved by the SPC for adoption by Plenary Council in 2015:

1.	Cllr. Joe Conway
2.	Cllr. Tom Cronin
3.	Cllr. Jason Murphy
4.	Cllr. Seanie Power
5.	Cllr. James Tobin
6.	Cllr. Siobhan Whelan

- Draft Irish Language Scheme – recommended that scheme be brought to April full Council Meeting.
- Proposed Taking In Charge Policy – recommended adoption of amended policy and be brought to December full Council Meeting .

5 Sectoral Reps:

1.	Environment	John Galloway
2.	Business	Anne Marie Rossiter
3.	Community & Voluntary	John O'Donnell
4.	Farming	John Fitzgerald
5.	Social Inclusion	Donal Lehane

Annual Report 2015

A Strong Foundation





Property Management **Department Projects**

The Property Management Department manages land and property (other than local authority houses) owned by Waterford City and County Council. The section works with various directorates in the Council to achieve optimum use of the Councils landbank and acquires land and property rights required for the Councils various infrastructural projects.

Viking Triangle



The acquisition of a portfolio of properties from trustees of the Holy Ghost Hospital within the Viking Triangle was completed in October 2012. Property Management continues to support the work of the newly formed Waterford Viking Trust Ltd on the management of same.

In 2015 the Council completed the refurbishment of 121/122 The Quay and leased same to McLeary's Restaurant.

Chairman's Arch housing scheme was developed following acquisition of a number of semi derelict properties and 1 and 2 Cathedral Square have been restored.

Mapping / Management Information & PRA-Digitisation

The Property Management Department continue to work with the Property Registration Authority (previously Land Registry) to improve mutual knowledge on Waterford City and County Councils' landbank records. The former Waterford City Council was the first Authority to request digital ownership details from the PRA.

The Property Management Department in conjunction with the Councils GIS Co-ordinator continues to examine the effect of the amalgamation of City and County on the landbank/property records held by both authorities, how to present information digitally and on an appropriate management system for same.



Property Management Department Projects

Property Management Projects



List of 2015 Projects

- Acquisition of former Post Office Sorting Office at The Quay.
- Acquisition of the Old Railway Station Tramore.
- Acquisition of 3.6 acres at Curraheen/ Spring, Dungarvan.
- Lease of the Former Area Offices Tankfield Tramore to nearFORM.
- Compulsory Purchase Order process commenced for Greenway completion at Rinasilloge, Dungarvan Bay.
- Compulsory Purchase Order of approximately 20 acres of Tramore Town Park.
- Extension of the lease to Portlaw Heritage Centre.
- Lease to Cappoquin Salmon Anglers Assoc.
- Lease to Ballymacarbry Scout Group.
- Cathedral Presbytery leases from Diocese of Waterford and Lismore.
- Commenced Acquisition of Tallow Alms House.
- Acquisition of Lower Yellow Road/Military Road site.
- Disposal of Houses repossessed (mortgage default).
- Acquisition of small number of houses for housing stock.
- Sales of freeholds as they arose.
- Acquisition of various houses under Part V of the Planning and Development Act 2000.



Housing - Capital

Maintenance and Improvement of LA Housing

Waterford City and County Council aims to provide safe, good quality accommodation for the people with greatest need and work to prevent and eliminate homelessness.

Number of Maintenance requests in 2015



% of maintenance requests resolved in 2015



Number of vacant houses remediated in 2015



Average turnaround of vacant property in months



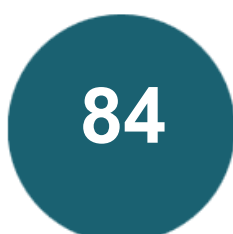
At any one time only **1.4%** of our overall housing stock is vacant



Number of houses that received insulation upgrading



Number of houses that benefited under the SEAI scheme



Number of private rented dwellings inspected under PRTB





Emergency Services

Waterford Fire Service

Waterford Fire Service responds to a wide variety of emergencies as well as monitoring and advising on fire safety in the built environment.

A total of 135 persons are employed in the service, comprising of officers, fulltime and part-time fire-fighters, administrative support and a brigade mechanic. The service operates from 10 fire stations under the control of the Chief Fire Officer.



The new Waterford Fire Station, Kilbarry, Waterford, commenced operations in June 2015.

Emergency Planning

The Fire Service leads the planning and preparation of Waterford City and County Council's response to emergencies of any nature. It does so by preparation and exercising of the Major Emergency Plan as well as advising on coordinated responses to emergencies other than major emergencies.

- A new Major Emergency Plan for Waterford City and County Council was drafted and adopted by Management in March 2015.
- The Council is developing a draft Severe Weather Plan in the light of recent weather events.
- A project has commenced to develop an Evacuation Plan in the event of a major emergency.



Emergency Services

Operation of the Fire Service



Brigades attended **1337** incidents in 2015: 777 Fire Calls, 383 Special Services and 178 False Alarms.

Special service incidents are wide ranging but include road traffic accidents, road hazards, chemical incidents, flooding, river rescue, river body recovery and the provision of fire cover for Coast Guard helicopter landings in the City.

The turnout time for both retained and fulltime brigade shows a reduction on 2014 figures. The retained reduced from 5 min 28 sec to 5 min 8 secs and the full time reduced from 1min 36 secs to 1 min 30 secs.

Brigade training was reviewed in early 2015 and a priority list of training developed. All prioritised training was carried out throughout the year including the following

courses: water awareness, working at heights, road traffic collision, airport response, breathing apparatus, compresses air foam, hydraulic platform operation and driving.

Fire Prevention

The fire service promotes fire safety in a number of ways: Inspecting premises and advising building owners, Reporting to the Courts on Liquor licensing applications, Enforcing fire safety by serving notices where necessary, Assessment of fire safety certificate applications, Advising the Planning Authority on planning applications, Inspecting and licensing petrol stations and Delivering Community Fire safety initiatives such as the Third Class Programme, Fire Safety Week and media campaigns.

- It was discussed and agreed at SPC in January 2015 that reports on all Emergency services activities would be given to Council Plenary and District meetings. Brigade activities in particular districts would be highlighted.
- The fire service engages with local media to highlight community fire safety initiatives. This was done during Fire Safety Week, pre Halloween and pre Christmas.
- A risk categorisation of premises has been completed and inspection of all high risk locations is ongoing and is expected to be complete by Quarter 4 2016.
- 69 fire safety certificates applications were received in 2015. The statutory process has an 8 week completion period.



Emergency Services

Building Control

The Building Control Department is concerned with the delivery of Waterford City and County Councils functions under the Building Control Regulations 2007-2015.

Number of Commencement Notices received

258

Number of Completion Certificates

66

Number of Disability Access Certificates

66

All applications were dealt with within the statutory time limits.

Civil Defence

Civil Defence is a volunteer-based emergency response organisation. Civil Defence supports the frontline emergency services, e.g. in dealing with severe weather or searching for missing people and also carries out community support activities, e.g. providing first aid cover at both local and national events. Civil Defence operates at national level under the Department of Defence with delivery of service through the local Authority.

Total number of volunteers in 2015

137

Up 12 from 2014



Number of exercises carried out in 2015

6

- All Service Exercises
- Regional Water Exercises
- National Radiation Monitoring
- Voluntary Emergency Services
- Inter Agency Marine Exercise
- Search Exercise

Number of activities carried out in 2015

207

- 119 training nights
- 88 duties, including:
 - 20 days Winterval
 - 9 days Missing Persons Search
 - 2 days Sean Kelly Tour

The target of 5 exercises was exceeded in 2015, as was the target of 100 activities.



Roads, Transportation and Safety

Maintenance and Improvement of National Primary and Secondary Roads



In 2015 the full network of National Primary and National Secondary Roads in Waterford were audited for defects.

Kilometres of National Primary Road Strengthened



Kilometres of National Secondary Road Strengthened

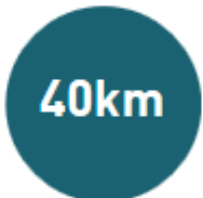


Maintenance and Improvement of Regional and Local Roads

Kilometres of Regional Road Strengthened



Length of Pavement Surveyed (Regional Roads)



Kilometres of Local Road Surface Dressed



Kilometres of Regional Road Surface Dressed



Number of Bridges Repaired/Restored (Regional Roads)



Kilometres of Local Road Drainage Works



Kilometres of Regional Road Drainage Works



Kilometres of Local Road Strengthened



Number of Bridges Repaired/Restored





Strategic Policy Committees

Transportation Infrastructure and Fire

Transportation Infrastructure and Fire (12)

Paul Daly, A/Director of Services

1 SPC Chair : **Cllr. Cha O'Neill**

6 Councillors :

1.	Cllr. Mary Butler
2.	Cllr. Pat Fitzgerald
3.	Cllr. Joe Kelly
4.	Cllr. Seamus O'Donnell
5.	Cllr. Sean Reinhardt
6.	Cllr. Adam Gary Wyse

5 Sectoral Reps:

1.	Development/Construction (CIF)	Tom O'Brien
2.	Business/Commercial	George Kehoe
3.	Environment	Jim Bowdren
4.	Social Inclusion	Garrett Wyse
5.	Community and Voluntary	James Coughlan

There were four SPC meetings held in 2015.

The following were passed by the SPC:

- 5 Axle Ban on certain streets in Waterford City
- Tow Away Policy
- Appeals Procedure for Temporary Road Closures
- Traffic Calming Policy
- Beach Bye Laws 2015
- Traffic and Parking Bye Laws Metropolitan Area
- Traffic and Parking Bye Laws Dungarvan/Lismore Area
- Appointed Stand Bye Laws Metropolitan Area
- Appointed Stand Bye Laws Dungarvan/Lismore Area

Annual Report 2015

Our Finances



Finance

Annual Financial Statement



Financial Summary for 2015

Summary of Revenue Account:	2015 €m	2014 €m
Opening Balance at 1st January	- 8.7	- 8.9
Expenditure for Year	114.1	120.3
Transfers to Reserves	5.9	7.7
	<u>120.0</u>	<u>128.0</u>
Income for Year		
State Grants	49.2	51.2
Goods and Services	38.1	43.7
Commercial Rates	33.4	33.3
	<u>120.7</u>	<u>128.2</u>
Surplus/(Deficit) for Year	0.7	0.2
Closing Balance at 31st December	<u>- 8.0</u>	<u>- 8.7</u>
Summary of Balance Sheet		
Fixed Assets	2,149.8	2,131.0
Work in Progress	15.5	20.9
Long Term Debtors	77.4	79.4
Current Assets	37.4	62.1
Current Liabilities	- 42.5	- 65.1
	<u>2,237.6</u>	<u>2,228.3</u>
Long Term Creditors	- 128.6	- 131.9
Net Assets/(Liabilities)	<u>2,109.0</u>	<u>2,096.4</u>
Represented by:		
Capitalisation Account	2,149.8	2,131.0
Work in Progress	12.7	20.0
Specific Revenue Reserve	0.5	0.5
General Revenue Reserve	- 8.0	- 8.7
Other Balances	- 46.0	- 46.4
Total Reserves	<u>2,109.0</u>	<u>2,096.4</u>



Finance

Council Expenses and Attendance

Training and Conference Expenses

	Training Expenses 2015	Conference Expenses 2015		Training Expenses 2015	Conference Expenses 2015
Cllr Liam Brazil (FG)			Cllr Eddie Mulligan (FF)	€392.32	€678.49
Cllr Breda Brennan (SF)			Cllr Jason Murphy (FF)	€2211.37	€660.87
Cllr Mary Butler (FF)	€211.51		Cllr Pat Nugent (FG)	€1,133.24	€706.35
Cllr John Carey (FG)	€3,235.22	€516.41	Cllr Seamus O Donnell (Ind)		
Cllr Declan Clune (SF)	€125.02		Cllr John O Leary (FF)	€2,451.01	€559.68
Cllr Joe Conway (Ind)	€3,400.31	€699.55	Cllr Cha O Neill (Ind)	€2,577.80	€475.54
Cllr Tom Cronin (FF)	€2,549.83	€629.98	Cllr Michael J O' Ryan (FF)		€699.61
Cllr John Cummins (FG)	€828.87	€699.45	Cllr Lola O Sullivan (FG)		€504.57
Cllr Davy Daniels (Ind)			Cllr Seanie Power (FG)	€360.00	
Cllr Declan Doocey (FG)	€845.73		Cllr John Pratt (Lab)	€2,604.02	€512.45
Cllr Pat Fitzgerald (SF)			Cllr Eamon Quinlan (FF)		
Cllr Damien Geoghegan (FG)	€2,098.30	€483.67	Cllr Sean Reinhardt (Ind)	€1,443.80	€598.33
Cllr Jim Griffin (SF)			Cllr Mary Roche (Ind)	€265.71	
Cllr Blaise Hannigan (Ind)			Cllr James Tobin (FF)	€1452.22	€700
Cllr John Hearne (SF)			Cllr Siobhan Whelan (SF)	€50	
Cllr Joe Kelly (Ind)			Cllr Adam Gary Wyse (FF)		



Finance

Council Expenses and Attendance

Council Meeting Attendance					
	Total meetings held 2015*	Total meetings attended		Total meetings held 2015*	Total meetings attended
Cllr Liam Brazil (FG)	35	28	Cllr Eddie Mulligan (FF)	43	39
Cllr Breda Brennan (SF)	41	37	Cllr Jason Murphy (FF)	40	37
Cllr Mary Butler (FF)	34	32	Cllr Pat Nugent (FG)	41	33
Cllr John Carey (FG)	41	38	Cllr Seamus O Donnell (Ind)	36	26
Cllr Declan Clune (SF)	37	26	Cllr John O Leary (FF)	37	31
Cllr Joe Conway (Ind)	36	31	Cllr Cha O Neill (Ind)	41	33
Cllr Tom Cronin (FF)	34	31	Cllr Michael J O' Ryan (FF)	32	30
Cllr John Cummins (FG)	39	28	Cllr Lola O Sullivan (FG)	39	33
Cllr Davy Daniels (Ind)	39	36	Cllr Seanie Power (FG)	36	33
Cllr Declan Doocey (FG)	39	36	Cllr John Pratt (Lab)	39	32
Cllr Pat Fitzgerald (SF)	48	42	Cllr Eamon Quinlan (FF)	39	34
Cllr Damien Geoghegan (FG)	35	23	Cllr Sean Reinhardt (Ind)	42	31
Cllr Jim Griffin (SF)	37	33	Cllr Mary Roche (Ind)	41	34
Cllr Blaise Hannigan (Ind)	37	31	Cllr James Tobin (FF)	35	30
Cllr John Hearne (SF)	37	34	Cllr Siobhan Whelan (SF)	34	29
Cllr Joe Kelly (Ind)	42	29	Cllr Adam Gary Wyse (FF)	38	34

* Meetings included:- Plenary Council, Municipal District, Special Meetings, SPC's and JPC



Comhairle Cathrach & Contae Phort Láirge
Waterford City & County Council

www.waterfordcouncil.ie
contact@waterfordcouncil.ie
0761 10 20 20